



CONSTRUCTION DOCUMENTS

As-Builts
1/13/2025
CSUSA

PINE BLUFF, AR

6th AVE DISTRICT

PROJECT NAME

SEAL

REVISIONS

NO.	DESCRIPTION	DATE
1	ADD 2	2/20/23

1"
ONE INCH AT FULL SIZE IF NOT ONE INCH SCALE ACCORDINGLY

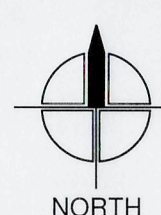
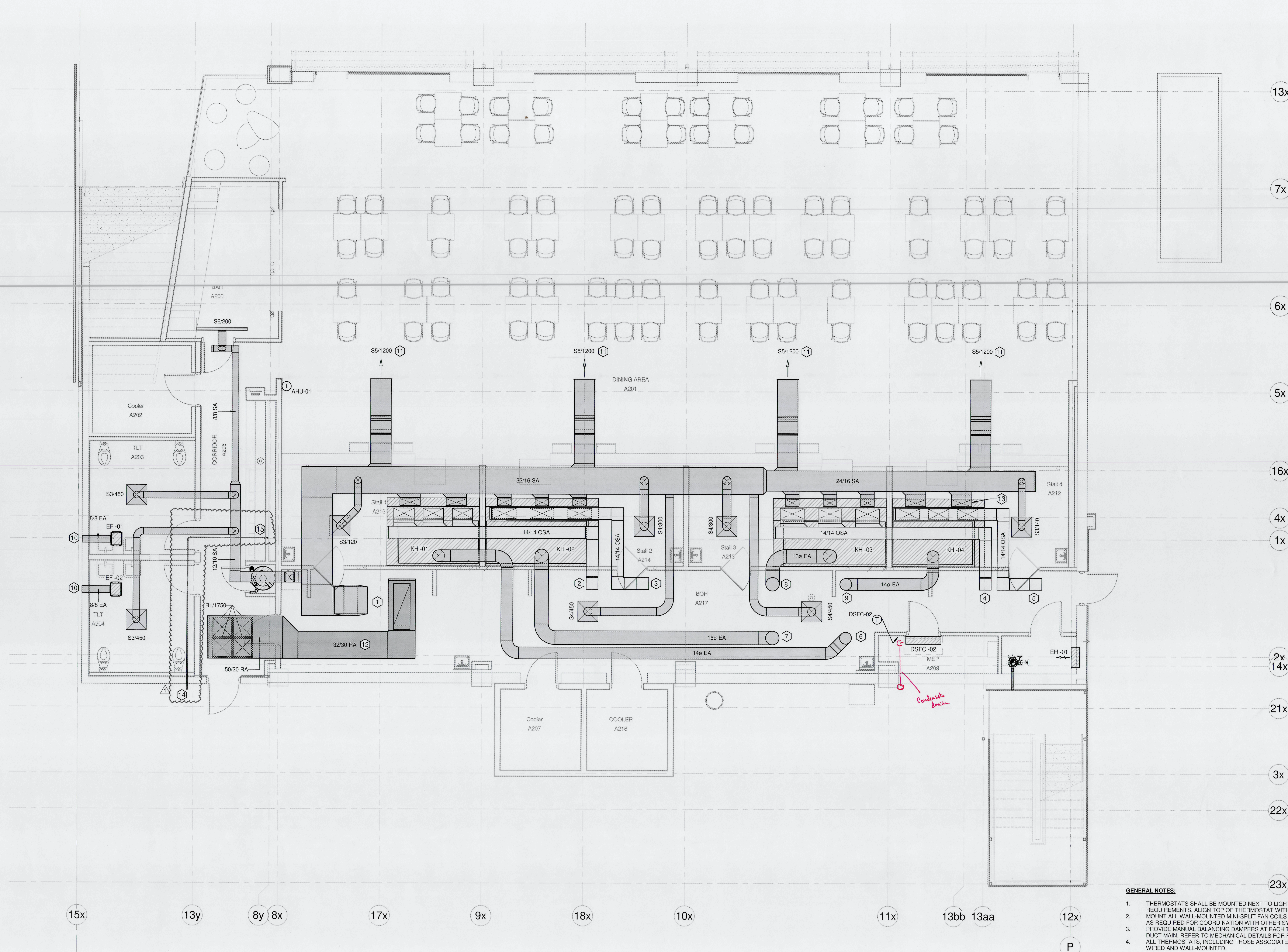
FOOD HALL L1 HVAC PLAN
SHEET NAME

DATE 01/13/2023

PROJECT NUMBER

M2-101

SHEET NUMBER



1 FOOD HALL L1 HVAC PLAN
1/4" = 1'-0"

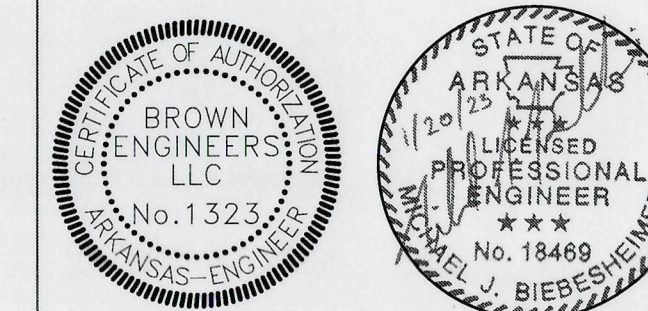
HVAC -- FOOD HALL BRANCH DUCT CONNECTION SIZES				
<i>**Note: For Rectangular Ducts, shortest dimension reflects depth unless otherwise noted on plans.</i>				
DESIGNATION	INLET Ø	INLET HT.	INLET W.	SYSTEM TYPE
S3	8"			Supply Air
S4	10"			Supply Air
S5	6"	24"		Supply Air
S6	5 1/4"	9 1/2"		Supply Air
R1	22"	22"		Return Air

GENERAL NOTES:

1. THERMOSTATS SHALL BE MOUNTED NEXT TO LIGHT SWITCH OF ASSOCIATED ROOM PER ADA REQUIREMENTS. ALIGN TOP OF THERMOSTAT WITH TOP OF LIGHT SWITCH FACE PLATE.
2. MOUNT ALL WALL-MOUNTED MINI-SPLIT FAN COILS AT APPROX. 8'0" A.F.F. ADJUST HEIGHT AS REQUIRED FOR COORDINATION WITH OTHER SYSTEMS IN ROOM.
3. PROVIDE MANUAL BALANCING DAMPERS AT EACH TAKEOFF AND FINAL TRANSITION FROM DUCT MAIN. REFER TO MECHANICAL DETAILS FOR FURTHER REQUIREMENTS.
4. ALL THERMOSTATS, INCLUDING THOSE ASSOCIATED WITH MINI-SPLITS, SHALL BE HARD-WIRED AND WALL-MOUNTED.

KEYED NOTES:

1. UP TO AHU-01
2. UP TO MAU-01
3. UP TO MAU-02
4. UP TO MAU-03
5. UP TO MAU-04
6. UP TO KEF-01
7. UP TO KEF-02
8. UP TO KEF-03
9. UP TO KEF-04
10. WALL CAP EQUAL TO GREENHECK WC-8X8.
11. INSTALL 12" AFF.
12. PROVIDE SEISMIC BRACING AT RETURN DUCT LARGER THAN 6" IN CROSS SECTIONAL AREA.
13. ROUTE SA/OSA BRANCH DUCT FULL SIZE TO KITCHEN HOOD PLENUMS. REFER FOOD SERVICE CONSULTANT PACKAGE FOR HOOD MANUFACTURER DRAWINGS. TYP OF ALL.
14. UP TO SECOND FLOOR.
15. DISCHARGE TO GRADE LOW IN WALL.



CONSTRUCTION DOCUMENTS

As-Builts
1/13/2025
CSUSA

PINE BLUFF, AR

6th AVE DISTRICT

PROJECT NAME

SEAL

REVISIONS

NO.	DESCRIPTION	DATE
1	ADD 2	2/20/23

1" = 1" INCH AT FULL SIZE IF NOT ONE INCH SCALE ACCORDINGLY

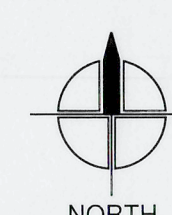
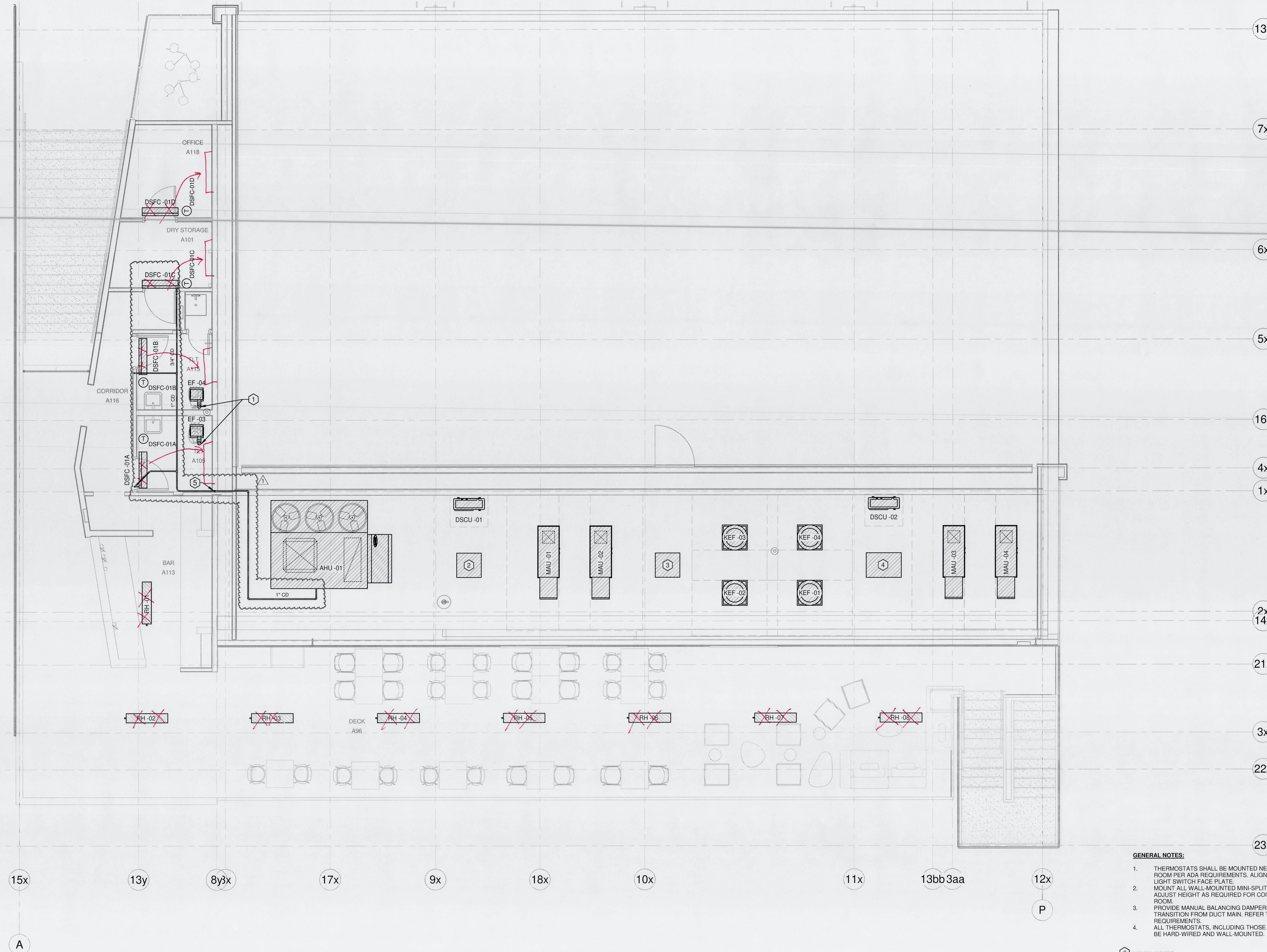
FOOD HALL L2 HVAC PLAN

SHEET NAME

DATE 01/13/2023

PROJECT NUMBER

M2-102
SHEET NUMBER



1 FOOD HALL L2 HVAC PLAN
1/4" = 1'-0"

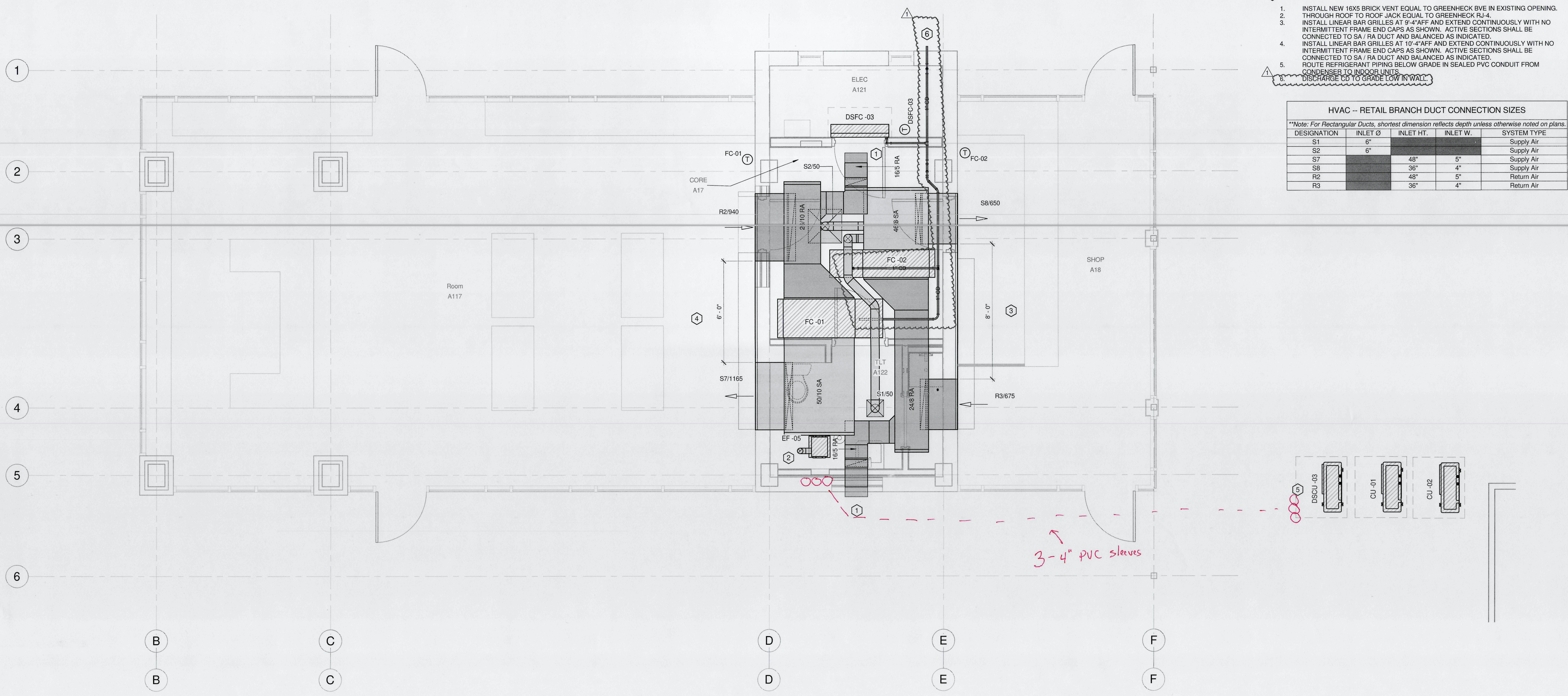
CONTRACTOR SHALL BE FULLY RESPONSIBLE FOR ALL CHANGES REQUIRED BY SUBSTITUTED EQUIPMENT, INCLUDING DIMENSIONAL SERVICE CLEARANCES IN COORDINATION WITH EQUIPMENT YARD ENCLOSURE AS INDICATED ON PLANS.

GENERAL NOTES:

1. THERMOSTATS SHALL BE MOUNTED NEXT TO LIGHT SWITCH OF ASSOCIATED ROOM PER ADA REQUIREMENTS. ALIGN TOP OF THERMOSTAT WITH TOP OF LIGHT SWITCH FACE PLATE.
2. MOUNT ALL WALL-MOUNTED MINI-SPLIT FAN COILS AT APPROX. 8'-0" A.F.F. ADJUST HEIGHT AS REQUIRED FOR COORDINATION WITH OTHER SYSTEMS IN ROOM.
3. PROVIDE MANUAL BALANCING DAMPERS AT EACH TAKEOFF AND FINAL TRANSITION FROM DUCT MAIN. REFER TO MECHANICAL DETAILS FOR FURTHER REQUIREMENTS.
4. ALL THERMOSTATS, INCLUDING THOSE ASSOCIATED WITH MINI-SPLITS, SHALL BE HARD-WIRED AND WALL-MOUNTED.

KEYED NOTES:

1. UP THROUGH ROOF TO ROOF JACK EQUAL TO GREENHECK RJ-4.
2. BEER WALK-IN COOLER CONDENSING UNIT FURNISHED BY KITCHEN EQUIPMENT VENDOR. INSTALL PER MANUFACTURER RECOMMENDATIONS.
3. BOH WALK-IN COOLER CONDENSING UNIT FURNISHED BY KITCHEN EQUIPMENT VENDOR. INSTALL PER MANUFACTURER RECOMMENDATIONS.
4. BOH WALK-IN FREEZER CONDENSING UNIT FURNISHED BY KITCHEN EQUIPMENT VENDOR. INSTALL PER MANUFACTURER RECOMMENDATIONS. ROUTE COIL DOWN IN WALL TO FIRST FLOOR.



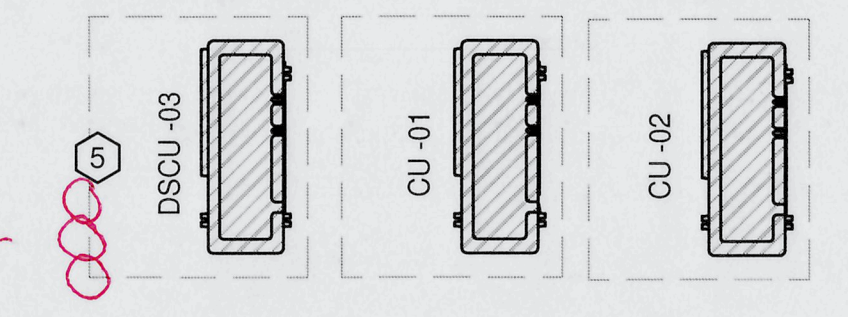
- GENERAL NOTES:**
1. THERMOSTATS SHALL BE MOUNTED NEXT TO LIGHT SWITCH OF ASSOCIATED ROOM PER ADA REQUIREMENTS. ALIGN TOP OF THERMOSTAT WITH TOP OF LIGHT SWITCH FACE PLATE.
 2. MOUNT ALL WALL-MOUNTED MINI-SPLIT FAN COILS AT APPROX. 8'-0" A.F.F. ADJUST HEIGHT AS REQUIRED FOR COORDINATION WITH OTHER SYSTEMS IN ROOM.
 3. PROVIDE MANUAL BALANCING DAMPERS AT EACH TAKEOFF AND FINAL TRANSITION FROM DUCT MAIN. REFER TO MECHANICAL DETAILS FOR FURTHER REQUIREMENTS.
 4. ALL THERMOSTATS, INCLUDING THOSE ASSOCIATED WITH MINI-SPLITS, SHALL BE HARD-WIRED AND WALL-MOUNTED.

- KEYED NOTES:**
1. INSTALL NEW 16X5 BRICK VENT EQUAL TO GREENHECK BVE IN EXISTING OPENING.
 2. THROUGH ROOF TO ROOF JACK EQUAL TO GREENHECK RJ-4.
 3. INSTALL LINEAR BAR GRILLES AT 9'-4" AFF AND EXTEND CONTINUOUSLY WITH NO INTERMITTENT FRAME END CAPS AS SHOWN. ACTIVE SECTIONS SHALL BE CONNECTED TO SA / RA DUCT AND BALANCED AS INDICATED.
 4. INSTALL LINEAR BAR GRILLES AT 10'-4" AFF AND EXTEND CONTINUOUSLY WITH NO INTERMITTENT FRAME END CAPS AS SHOWN. ACTIVE SECTIONS SHALL BE CONNECTED TO SA / RA DUCT AND BALANCED AS INDICATED.
 5. ROUTE REFRIGERANT PIPING BELOW GRADE IN SEALED PVC CONDUIT FROM CONDENSER TO INDOOR UNITS.
 6. DISCHARGE CD TO GRADE LOW IN WALL.

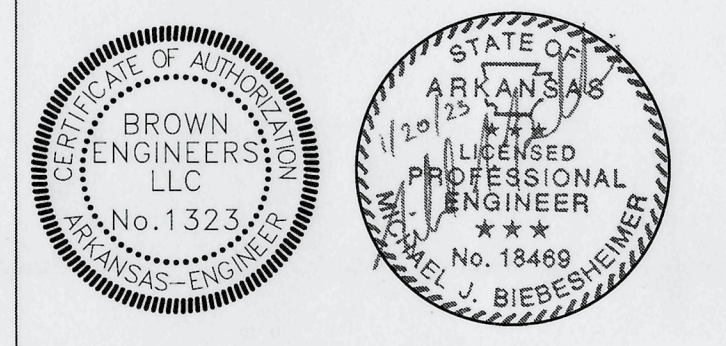
HVAC -- RETAIL BRANCH DUCT CONNECTION SIZES

***Note: For Rectangular Ducts, shortest dimension reflects depth unless otherwise noted on plans.*

DESIGNATION	INLET Ø	INLET HT.	INLET W.	SYSTEM TYPE
S1	6"			Supply Air
S2	6"			Supply Air
S7		48"	5"	Supply Air
S8		36"	4"	Supply Air
R2		48"	5"	Return Air
R3		36"	4"	Return Air



1 RETAIL HVAC FLOOR PLAN
3/8" = 1'-0"
NORTH



CONSTRUCTION DOCUMENTS

As-Builts
1/13/2025
CSUSA

PINE BLUFF, AR

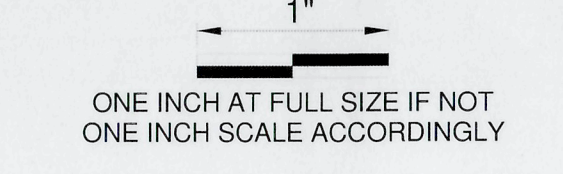
6th AVE DISTRICT

PROJECT NAME

SEAL

REVISIONS

NO.	DESCRIPTION	DATE
1	ADD 2	2/20/23



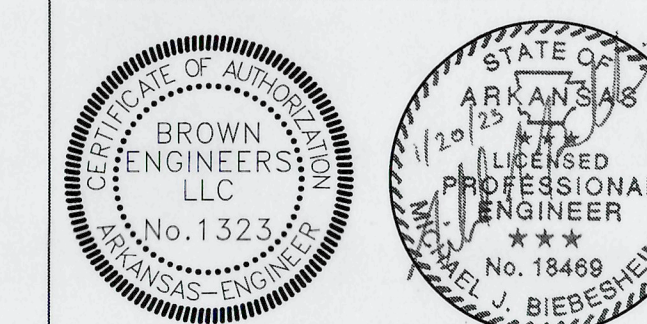
RETAIL HVAC PLAN

SHEET NAME

DATE 01/13/2023

PROJECT NUMBER

M3-101
SHEET NUMBER



CONSTRUCTION DOCUMENTS

As-Built
1/13/2025
CSUSA

PINE BLUFF, AR

6th AVE DISTRICT

PROJECT NAME

SEAL

REVISIONS

NO.	DESCRIPTION	DATE

1" = 1" SCALE
ONE INCH AT FULL SIZE IF NOT ONE INCH SCALE ACCORDINGLY

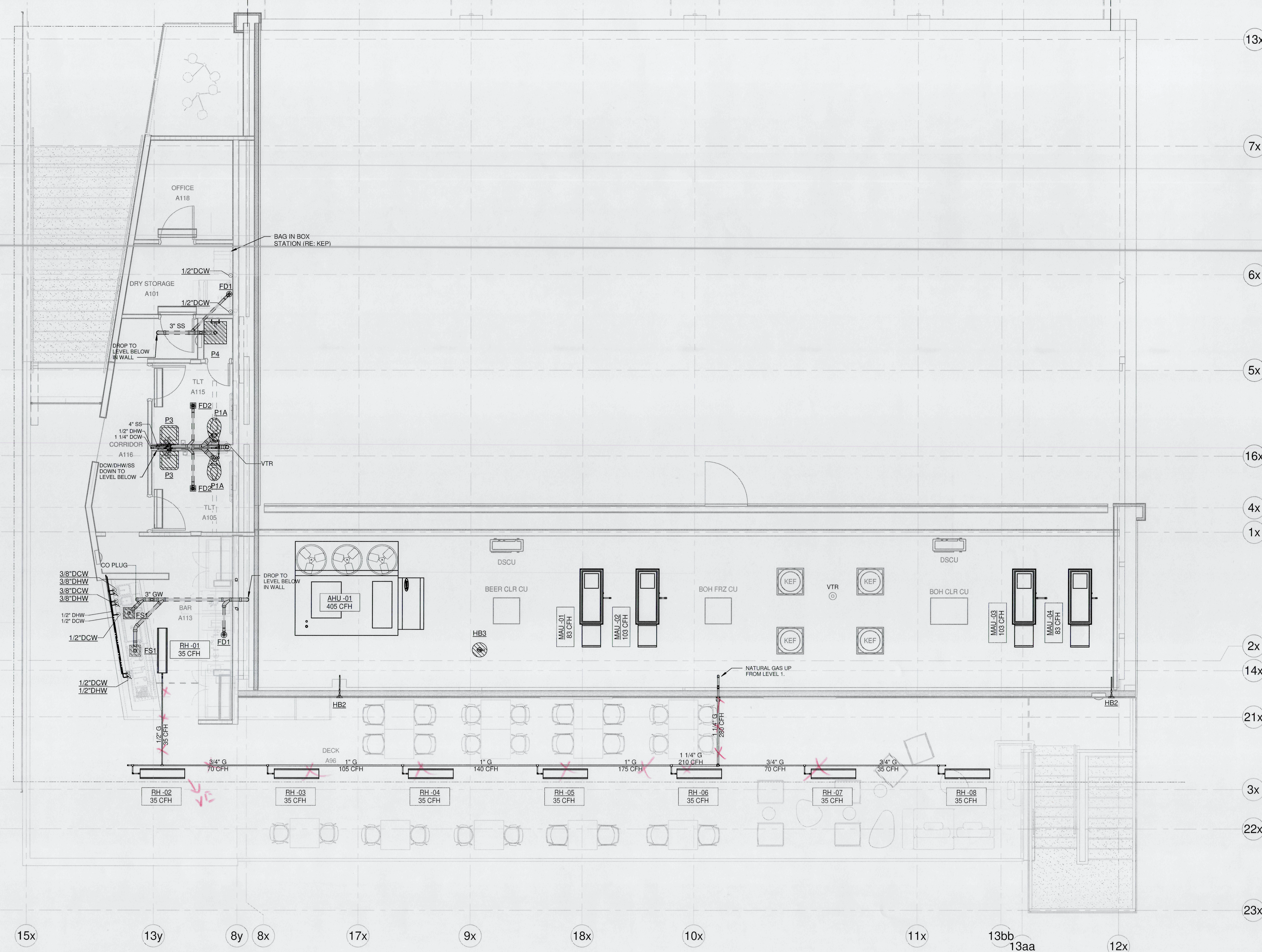
FOOD HALL - L2 PLUMBING PLAN

SHEET NAME

DATE 01/13/2023

PROJECT NUMBER

P2-201
SHEET NUMBER



PLUMBING -- FIXTURE CONNECTION Ø				
TAG	DESCRIPTION	BRANCH CONNECTIONS		
		DCW	DHW	SS
COTG	CLEAN OUT TO GRADE			4"
FCO1	FLOOR CLEANOUT - ROUND			4"
FCO2	FLOOR CLEANOUT - SQUARE			4"
FD1	FLOOR DRAIN - 6" STRAINER			2"
FD2	FLOOR DRAIN, 6" SQUARE STRAINER			2"
FS1	12x12 FLOOR SINK - 8" DEPTH			3"
FS2	FLOOR TROUGH - KITCHEN			3"
HB1	FROST PROOF HOSE BIBB	3/4"		
HB2	ENCLOSED WALL HYDRANT - EXTERIOR	3/4"		
HB3	FROST PROOF ROOF HYDRANT	3/4"		1/2"
MS	MOP SINK - PER KEP	1/2"	1/2"	3"
P1A	WATER CLOSET - ADA HEIGHT	1"		4"
P1B	WATER CLOSET - STANDARD HEIGHT	1"		4"
P2	WATER CLOSET - FLUSH TANK	1/2"		4"
P3	WALL MOUNT LAVATORY	1/2"	1/2"	1 1/2"
P4	MOP SINK	1/2"	1/2"	3"
P5	HANDWASH SINK	1/2"	1/2"	2"

1 FOOD HALL L2 PLUMBING PLAN
1/4" = 1'-0"

- NATURAL GAS GENERAL NOTES:**
- ALL GAS PIPE SIZING IS BASED ON SYSTEM LONGEST LENGTH FROM THE REGULATOR AND EQUIPMENT DEMAND SHOWN ON THE SCHEMATIC. CONTRACTOR SHALL FIELD VERIFY EXISTING CONDITIONS AND NOTIFY ENGINEER IF CONDITIONS DIFFER FROM SCHEMATIC PLAN.
 - REFER TO CIVIL DETAILS AND SPECIFICATIONS FOR INSTALLATION OF EXTERIOR OR BELOW GRADE PIPING.
 - REFER TO DETAILS FOR GAS CONNECTION TO MECHANICAL EQUIPMENT REQUIREMENTS.
 - ALL NATURAL GAS PIPING SHALL BE SUPPORTED IN ACCORDANCE WITH ASCE 7, CHAPTER 13 REQUIREMENTS. REFER TO STRUCTURAL FOR BUILDING SEISMIC DESIGN CATEGORY.

- NATURAL GAS GENERAL NOTES:**
- SYSTEM PRESSURE: LESS THAN 2psi
 - SYSTEM LONGEST LENGTH: 100'-0"